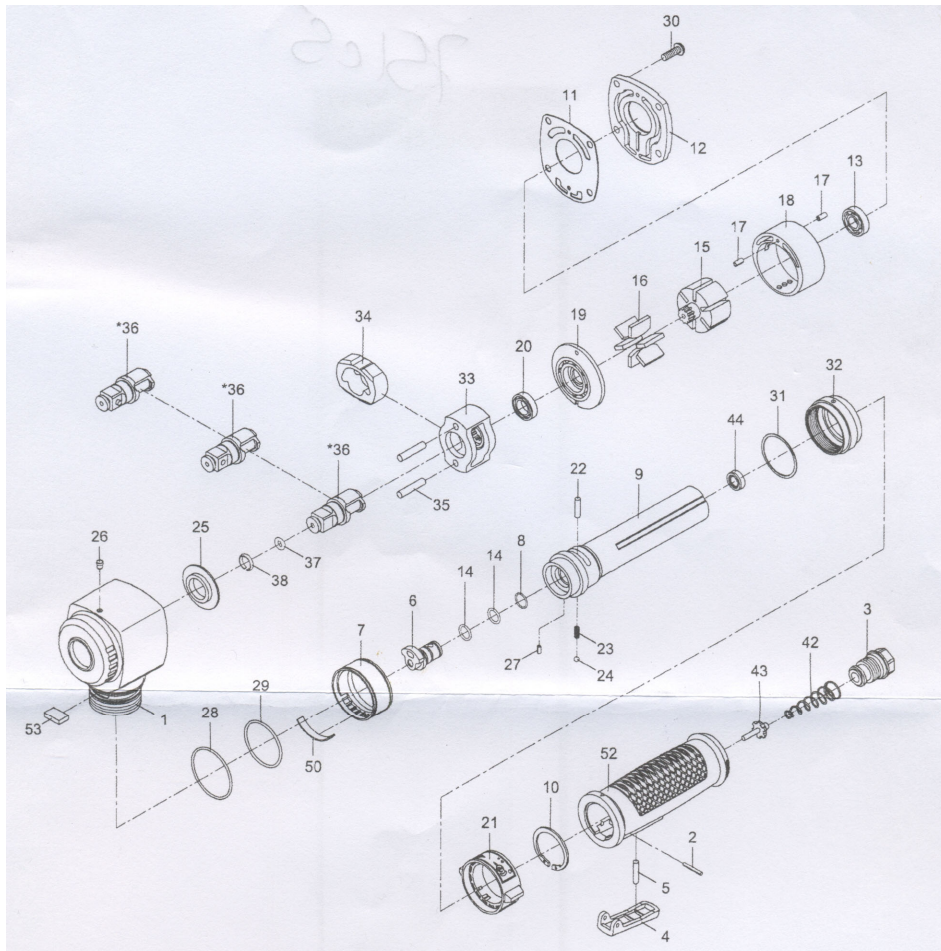




# RESERVEDELISOVERSIGT – VARENDR. 75105

2.



Index No.	Parts No.	Description	Index No.	Parts No.	Description
1	41-401001-0002	Motor Housing	24	40145	Steel Ball (1/8")
2	70102	Spring Pin (2.5x20)	25	41-401026	Anvil Bushing
3	41-401003	Air Inlet	26	41-401254	Oil Cap (1/8")
4	41-401004	Throttle Lever	27	51217	Spring Pin (2x4)
5	41-401005	Pin	28	OR03708106	O-Ring (37.8x1.6)
6	41-401006	Reverse Valve	29	OR03407108	O-Ring (34.65x1.78)
7	41-401007	Exhaust Diffuser	30	41-401030	Screw (4) (M5x15L)
8	OR01000100	O-Ring (10x1)	31	41-401031	Washer
9	41-401009	Handle	32	41-401032	Clamp Nut
10	206002	Inverted Retaining Ring (ISTW-30)	33	41-401008-21	Hammer Cage
11	41-401034	Gasket	34	41-401211	Hammer
12	41-401020	Rear Cover	35	41-401017-21	Hammer Pin (2)
13	040120	Ball Bearing (EE3)		43-401002-21	Anvil (R-Type 1/2")
14	OR00905105	O-Ring (2) (9.5x1.5)	*36	43-401002-22	Anvil (RH-Type 1/2")
15	41-401015	Rotor		43-401002-23	Anvil (M-Type 1/2")
16	41-401016	Rotor Blade (6)	37	40305	O-Ring (6.5x2)
17	70117-13	Spring Pin (21) (2.5x5)	38	40303	Retaining Ring
18	41-401018	Cylinder	42	43-403847	Valve Spring
19	41-401019	Front End Plate	43	75-725146	Valve Stem
20	06801	Ball Bearing (6801)	44	75-725145	Rubber Spacer
21	41-401021	Reverse Valve Knob	50	41-401050	Muffler Material
22	610225	Pin (4x15.8)	52	41-401052	Plastic Body
23	795846	Spring	53	41-401053	Muffler Material

\*Optional Parts  
1802-010

43-4010-0002  
02,23,2018



**BATO Nordic a/s**

Laerkevej 10, DK-4200 Slagelse

### EC DECLARATION OF CONFORMITY

According to the following EC Directives  
- Machinery Directive: 2006/42/EC



We declare that the machine described hereafter :

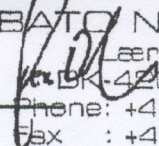
**Machine name : 1/2" Angle Impact Wrench – Jumbo Hammer**

**Model : 75105**

**Technical Data:** Free Speed 8,500 RPM  
Anvil Size 1/2" ( 13 mm)  
Air Pressure 90 psi (6.2 bar)  
Average Air Consumption 4 cfm

- EN ISO 12100:2010 / Safety of machinery — General principles for design — Risk assessment and risk reduction (ISO 12100:2010)
- EN ISO 11148-6:2012 / Hand-held non-electric power tools - Safety requirements - Part 6: Assembly power tools for threaded fasteners (ISO 11148-6:2012)
- EN ISO 28927-2:2009 / Hand-held portable power tools - Test methods for evaluation of vibration emission - Part 2: Wrenches, nutrunners and screwdrivers (ISO 28927-2:2009)  
Vibration Level :  $9.96 \text{ m/s}^2$  , the uncertainty,  $K= 2.1 \text{ m/s}^2$
- EN ISO 15744:2008 / Hand-held non-electric power tools - Noise measurement code - Engineering method (grade 2) (ISO 15744:2002)  
Sound Pressure : 92.2 dBA  
Sound Power : 103.2 dBA

Date: May 04, 2018

  
BATO NORDIC A/S  
Laerkevej 10  
DK-4200 Slagelse  
Phone: +45 5850 2210  
Fax : +45 5850 2219