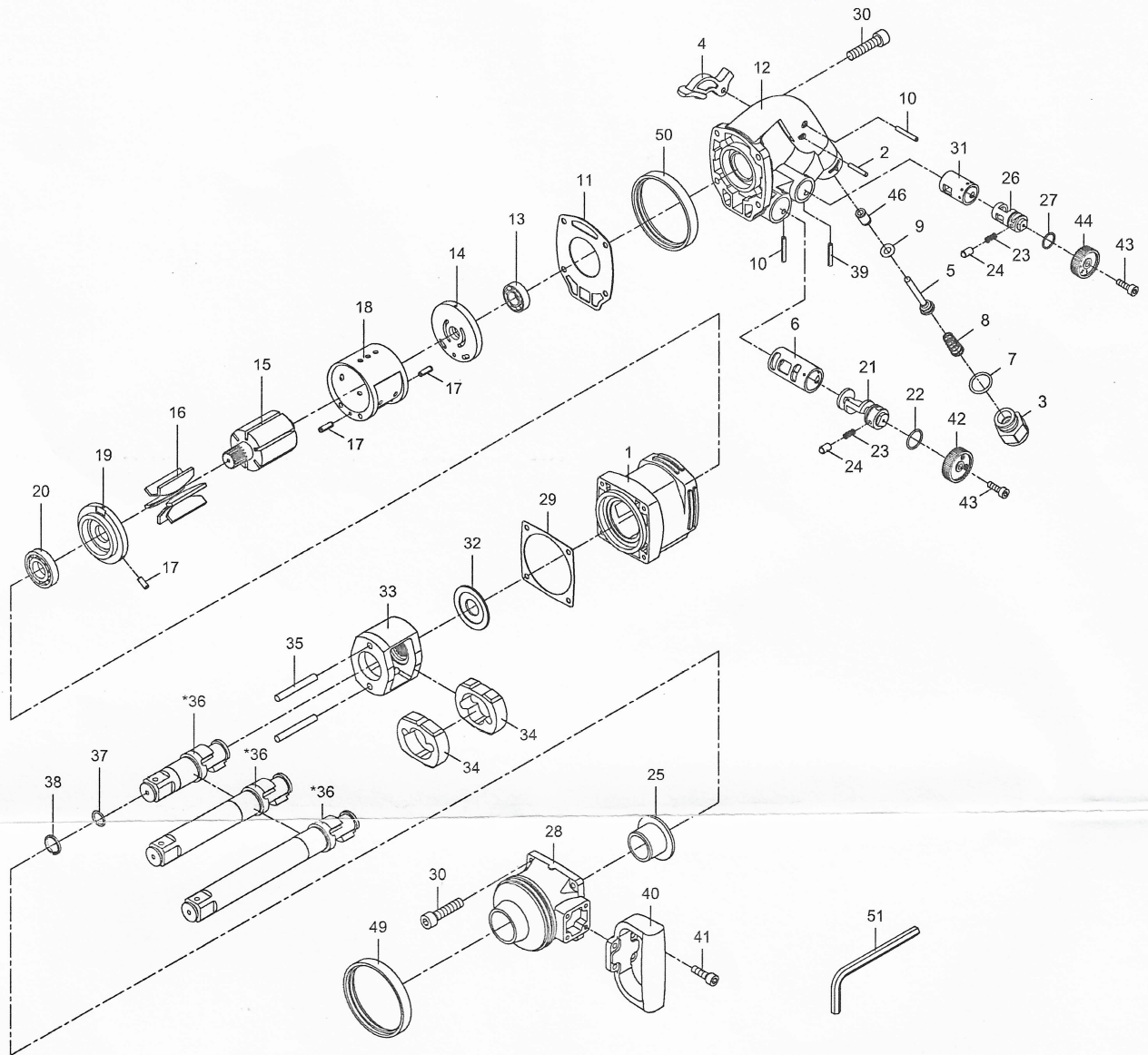


1" PROFESSIONAL IMPACT WRENCH



| Index No. | Parts No. | Description | Index No. | Parts No. | Description |
|-----------|--------------|-----------------------|-----------|---------------|-------------------------|
| 1 | 47-407601 | Motor Housing | 26 | 47-407621 | Regulator Valve |
| 2 | PN04002308 | Pin (4x23.8) | 27 | 62009 | O-Ring (14.5x1.5) |
| 3 | 47-407103 | Air Inlet | 28 | 47-407328 | Hammer Case |
| 4 | 47-407304 | Trigger | 29 | 47-407335 | Gasket |
| 5 | 47-407105 | Valve Stem | 30 | 7H-753539 | Screw (8) (M6x25L) |
| 6 | 47-407606 | Valve Bushing | 31 | 47-407646 | Valve Bushing |
| 7 | OR01908204 | O-Ring (19.8x2.4) | 32 | 47-407327 | Washer |
| 8 | 43-403147 | Valve Spring | 33 | 47-407308 | Hammer Cage |
| 9 | OR00705305 | O-Ring (7.5x3.5 Hs90) | 34 | 47-407311 | Hammer (2) |
| 10 | 61902 | Spring Pin (2) (4x28) | 35 | 47-407317 | Hammer Pin (2) (7.9x63) |
| 11 | 47-407634 | Gasket | | 47-407302-11 | Anvil (1") |
| 12 | 47-407620 | Rear Cover | *36 | 47-4073L02-71 | Anvil (1" L=7") |
| 13 | 020320-12 | Ball Bearing (6003z) | | 47-4073L02-81 | Anvil (1" L=8") |
| 14 | 47-407314 | Rear End Plate | 37 | 10211 | O-Ring (17.8x2.4) |
| 15 | 47-407315-21 | Rotor | 38 | 47-405112 | Retainer Ring |
| 16 | 47-407316-21 | Rotor Blade (6) | 39 | SP04002500 | Spring Pin (4x25) |
| 17 | SP04001000 | Spring Pin (3) (4x10) | 40 | 47-407360 | Dead Handle |
| 18 | 47-407318 | Cylinder | 41 | 7H-753528 | Screw (4) (M6x20L) |
| 19 | 47-407419 | Front End Plate | 42 | 47-407611 | Regulator Knob |
| 20 | OR14 | Ball Bearing (R14) | 43 | 75-725136 | Screw (2) (M3x10L) |
| 21 | 47-407610 | Reverse Valve | 44 | 47-407612 | Regulator Knob |
| 22 | OR01803107 | O-Ring (18.3x1.7) | 46 | 47-407146 | Bushing |
| 23 | 43-403323 | Spring (2) | 49 | 47-407363 | Rubber Ring |
| 24 | 43-403324 | Pin (2) | 50 | 47-407363-12 | Rubber Ring |
| 25 | 47-407325 | Anvil Bushing | 51 | 10018 | Hex.Key Wrench (M5) |

* Optional Parts

47-4076-0001



BATO Nordic a/s
Faaborgvej 1, DK-4200 Slagelse

EC DECLARATION OF CONFORMITY

According to the following EC Directives
- Machinery Directive: 2006/42/EC



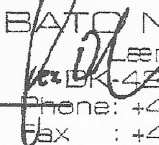
We declare that the machine described hereafter :

Machine name : 1" Light Duty Impact Wrench-Twin Hammer
Model: 7512

Technical Data: Free Speed 6,000 RPM
Anvil Size 1" (25.4 mm)
Air Pressure 90 psi (6.2 bar)
Average Air Consumption 10 cfm (282 L/Min)

- EN ISO 12100:2010 / Safety of machinery — General principles for design — Risk assessment and risk reduction (ISO 12100:2010)
- EN ISO 11148-6:2012 / Hand-held non-electric power tools - Safety requirements - Part 6: Assembly power tools for threaded fasteners (ISO 11148-6:2012)
- EN ISO 28927-2:2009 / Hand-held portable power tools - Test methods for evaluation of vibration emission - Part 2: Wrenches, nutrunners and screwdrivers (ISO 28927-2:2009)
Vibration Level : 14.8 m/s² , the uncertainty, K= 1.96 m/s²
- EN ISO 15744:2008 / Hand-held non-electric power tools - Noise measurement code - Engineering method (grade 2)
Sound Pressure : 99.5 dBA (Load)
Sound Power : 110.5 dBA (Load)

Date: Feb. 12, 2020


BATO NORDIC A/S
Faaborgvej 10
DK-4200 Slagelse
Phone: +45 5850 2210
Fax : +45 5850 2219