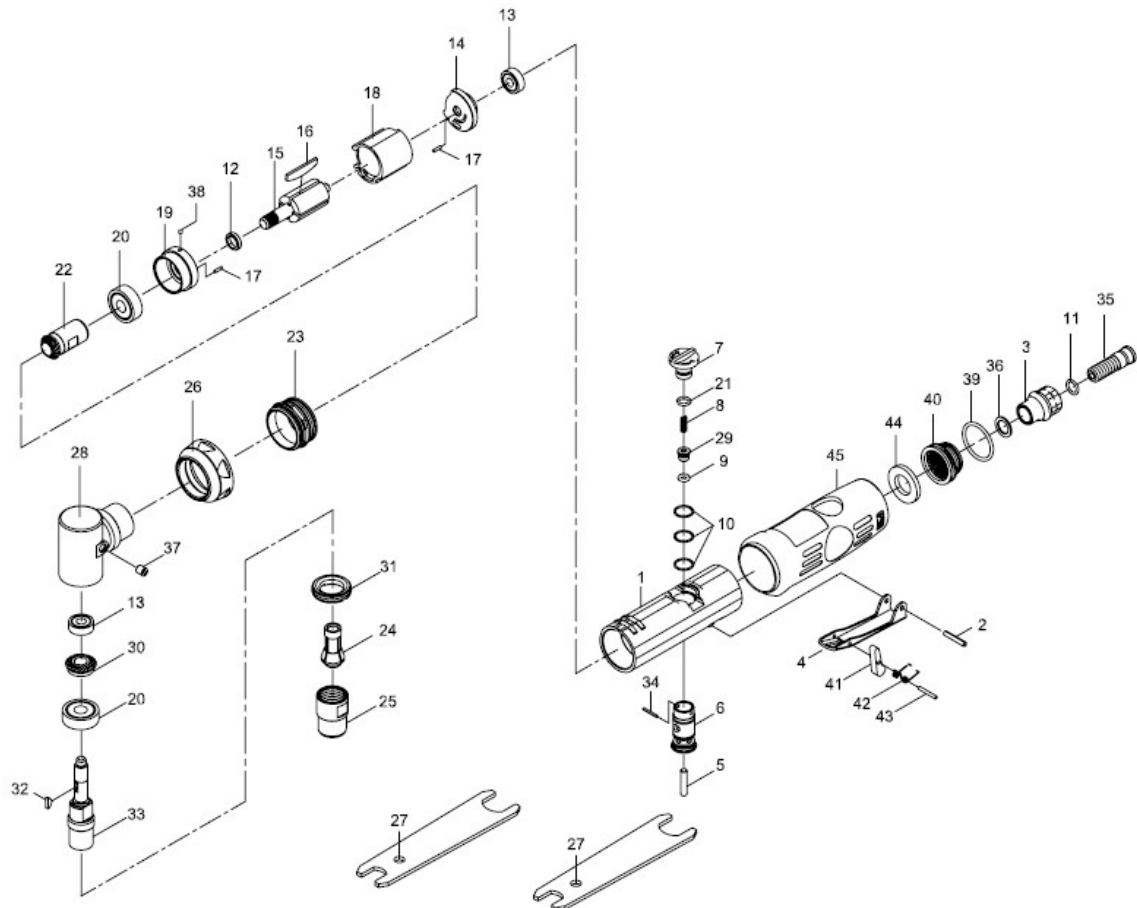




ProfTool

90° ANGLE DIE GRINDER



| Index No. | Parts No. | Description | Index No. | Parts No. | Description |
|-----------|------------|--------------------------|-----------|------------|--------------------|
| 1 | 52-522701 | Motor Housing | 24 | 51224 | Collet |
| 2 | 40337 | Lever Pin (3*18L) | 25 | 52225 | Collet Nut |
| 3 | 522203-21 | Air Inlet | 26 | 522226 | Front Cap |
| 4 | 52-522504 | Throttle Lever | 27 | 52227 | Spanner (2) |
| 5 | 52-522505 | Valve Shaft | 28 | 56228 | Head |
| 6 | 52-522706 | Valve | 29 | 522240 | Throttle Valve |
| 7 | 52-522738 | Knob | 30 | 52230 | Bevel Gear |
| 8 | 522208 | Spring | 31 | 52231 | Lock Ring |
| 9 | 30107 | O-Ring (3.8*1.9) | 32 | 52232 | Key |
| 10 | 52236 | O-Ring (3) (10.5*1. | 33 | 52233 | Spindle |
| 11 | OR00705105 | O-Ring (7.5*1.5) | 34 | SP01051200 | Spring Pin (1.5*12 |
| 12 | 52212 | Rotor Spacer | 35 | 522241-21 | Fixed Shaft |
| 13 | 052213 | Ball Bearing (2) (696ZZ) | 36 | 522243 | Washer |
| 14 | 52214 | Rear End Plate | 37 | 56237 | Oil Cap |
| 15 | 52215 | Rotor | 38 | 52245 | Steel Ball |
| 16 | 52216 | Vane (4) | 39 | 52235 | O-Ring (22.8*2 |
| 17 | 30117 | Spring Pin (2) (1.5*6) | 40 | 52206 | Deflector |
| 18 | 52218 | Cylinder | 41 | 51540 | Safety Bar |
| 19 | 52219 | Front End Plate | 42 | 522212 | Spring |
| 20 | 030120 | Ball Bearing (2) (608ZZ) | 43 | 522220 | Spring Pin (2*15L) |
| 21 | 40333-12 | O-Ring (6*1.5) | 44 | 522250 | Damping Material |
| 22 | 52222 | Pinion Gear | 45 | 52-522752 | Grip |
| 23 | 522223 | Front Coupling | | | |