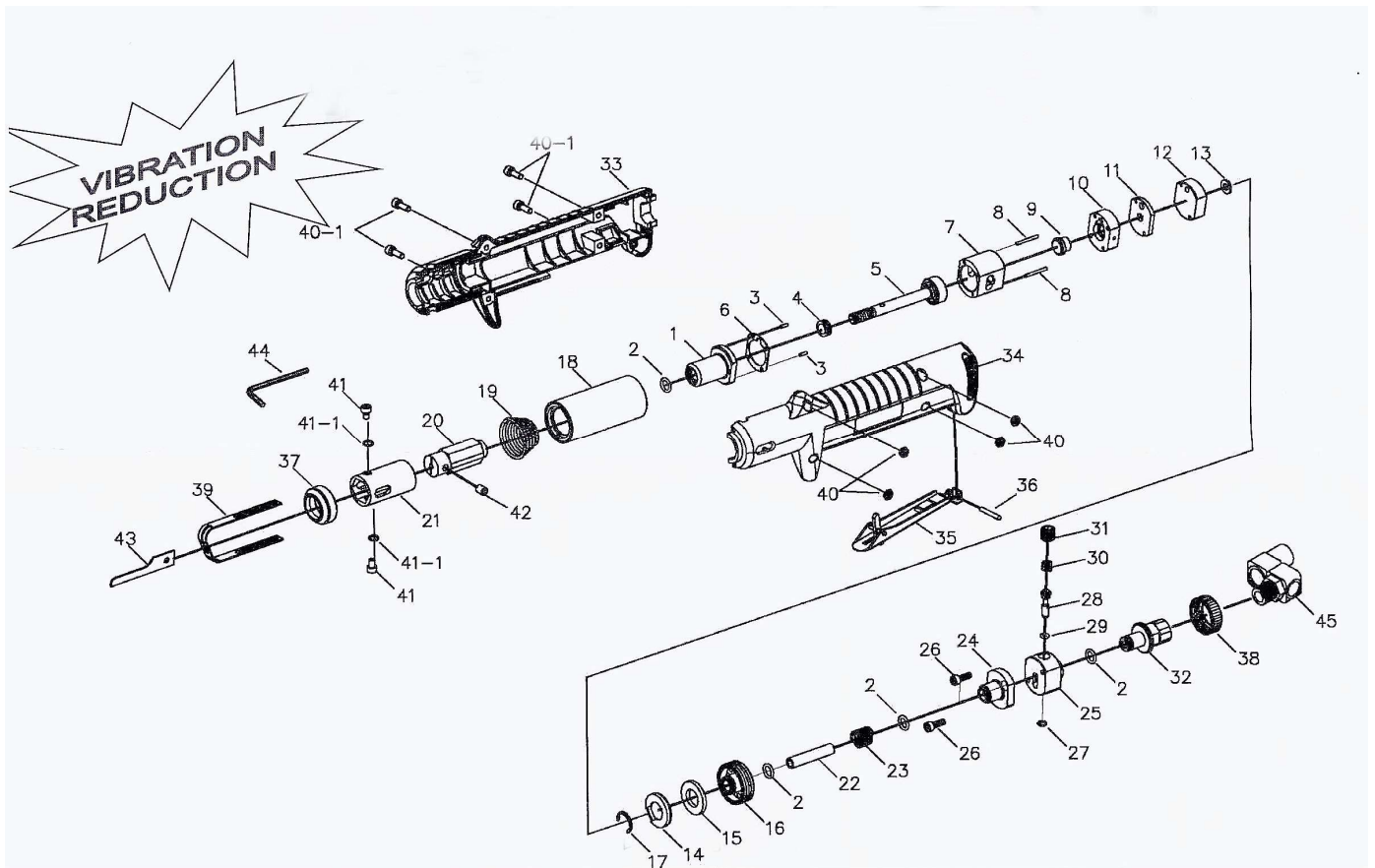


VIBRATION REDUCTION AIR SAW



Technical data:

Blow Per Min. B.P.M	:	9500
Stroke length mm	:	10
Operating Air Pressure PSI(bar)	:	90(6.2)
Avg. Air Cons. Cfm(l/min)	:	3(90)
Net Weight Ins(kgs)	:	1.12(0.51)
Air Inlet Size inch-NPT/PT	:	1/4
Min Hose Size inch(mm)	:	3/8(10)
Vibration m/s ²	:	3.7
Sound Pressure dBA	:	85

INDEX	PART	DESCRIPTION	INDEX	PART	DESCRIPTION	INDEX	PART	DESCRIPTION
1	314403	CylinderHead Ass'y	18	315409	Main Liner	35	315601	Safety Lever Ass'y
2	OR0812	O-Ring (4)	19	318607	Shock Absorbent Spring	36	RP3022	Rear Dowel Pin
3	RP2006	Front Dowel Pin (2)	20	316407M	Blade Holder Ass'y	37	318705	Lock Nut-Front
4	314418	Bumper	21	318102	Sliding Liner	38	318707	Lock Nut-Rear
5	315402	Piston Ass'y	22	319202	Connecting Hose	39	318706	Saw Blade Guide
6	314405	Gasket	23	319608	Spring	40	NN0407B	Nut (4)
7	314401	Cylinder	24	319203	Lid-Valve	40-1	040713	Screw (4)
8	RP2020	Rear Dowel Pin (2)	25	319204	Valve Case	41	040706H	Screw (2)
9	314302	Automatic Valve	26	040712	Screw (2)	41-1	SW0407	Spring Washer
10	314311	Valve Chest	27	OR0507	O-Ring		061006	Set Screw
11	314303	Valve Seat	28	314602	Valve Stem	43	314918Z-1	18T Saw Blade
12	315304	Valve Cap	29	OR0307	O-Ring		314924Z-1	24T Saw Blade
13	318203	Rubber Washer	30	318603	Spring		314932Z-1	32T Saw Blade
14	318704	Muffler Cap	31	182808	Plug Screw	44	314933	3mm Hex Wrench
15	301709	Muffler	32	319705	Air Inlet	45	922A19A	1/4"PT Universal Swivel
16	318211	Adaptor	33	319703Rb	Right Outer Housing			Air Inlet Joint
17	EC1317	Retaining Ring	34	319703Lb	Left Outer Housing			